

THE GRINDER[®] 3

ASSEMBLY AND CARE

Please use caution when filling and draining water.
Always use on a flat, even surface.

Please read to ensure proper use and warranty validity.



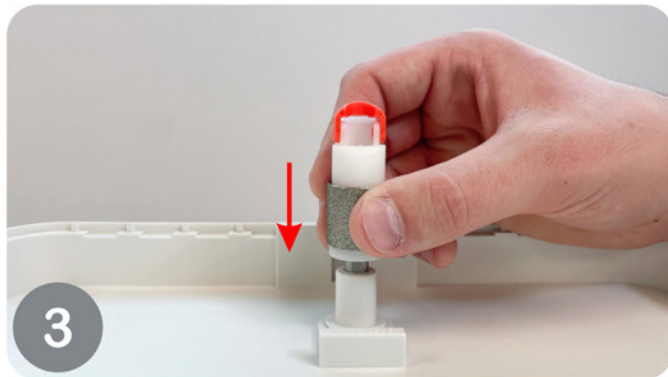
1

Insert the power cord into outlet.



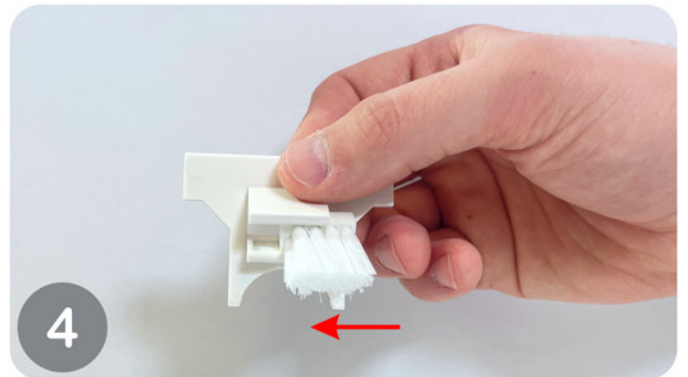
2

Remove Lift Grid and Mini Splash Guard.



3

Slide Quick-Fit Bit down shaft. Flip the orange lever DOWN to lock in place.



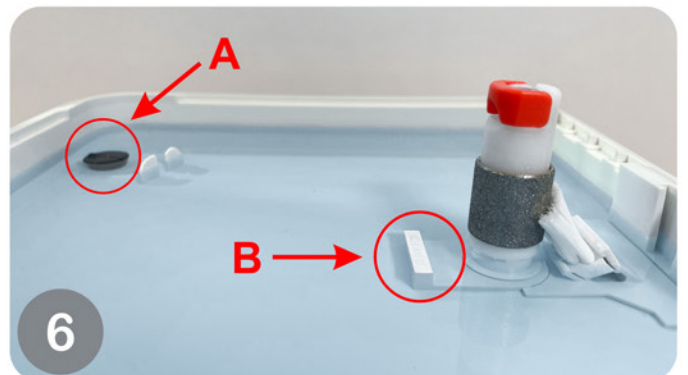
4

Wet brush bristles and slide brush into the Aqua Flow System holder.



5

Snap in self-locking Aqua Flow System holder between grinder shaft and reservoir back wall.



6

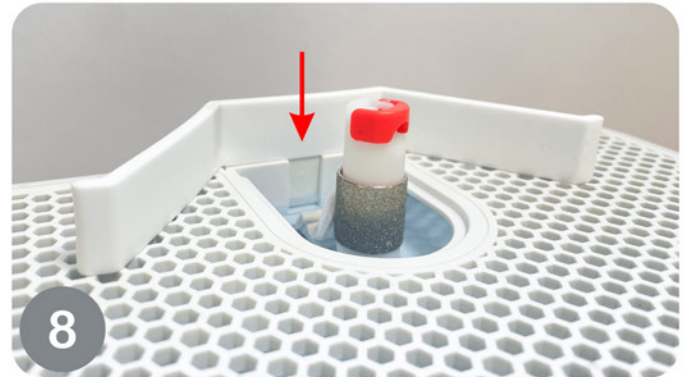
Place plug into drain hole, creating a watertight seal (A). Add water to reservoir, reaching the water level mark (B).

CAUTION: DO NOT SURPASS THE WATER LEVEL MARK. MISUSE VOIDS WARRANTY.

ASSEMBLY FOR THE GRINDER 3 CONTINUED



7 Place the Lift Grid over the water reservoir.



8 Install Mini Splash Guard into appointed slot.



9 Insert Everwear Bit Guard.



10 Press the power button to turn motor on/off.

CARE FOR THE GRINDER 3

- 1 Turn the machine off and unplug from outlet.
- 2 Disassemble by removing the Lift Grid, Everwear Bit Guard, Quick-Fit Bit, Aqua Flow System, and Mini Splash Guard. Wash accessories after use.
- 3 Carry The Grinder 3 to a waste area and dispose of water in reservoir by opening the drain plug.
- 4 Scrape accumulated glass debris from reservoir and discard.
- 5 Using a damp cloth, wipe the reservoir clean.



CAUTION: NEVER PLACE THE GRINDER IN SINK OR SATURATE WITH WATER.